

ATS inspect[®]

Visual Quality

Attribute Data Collection in the Food and Beverage Industry



Visual Quality Management Live

With costs of raw materials way up and purchasing power down, ATS provides much needed quality solutions to keep you from getting squeezed in the middle. With ATS Inspect not only can you be confident that your processes are in check and driving greater efficiencies, you can also pass the data along to other manufacturing, assembly and management areas that can continue to extract value.

The Ideal Solution for Quality

ATS Inspect attribute data collection software is designed to reduce the costs associated with waste, rework, warranty claims and production bottlenecks. Inspect is the ideal tool for collecting, analyzing and reporting quality data in applications where product quality information is critical.



Easy-to-Use Interface

An easy-to-use operator interface is one of ATS Inspect's principal strengths. Inspect software displays digital images of the part or assembly to be inspected and uses simple touch screen

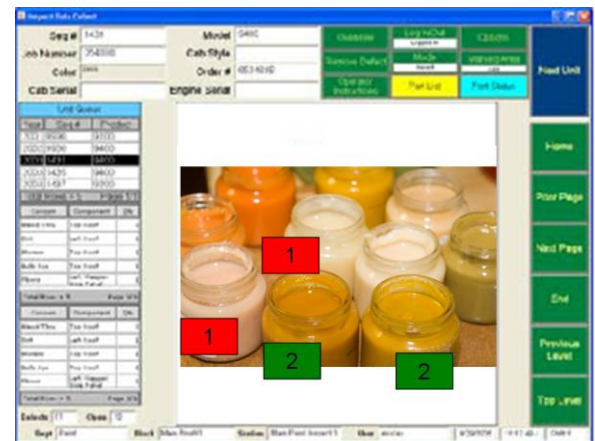
tools to identify and evaluate defects. Visual defect identification and control is as easy as touching the screen.

Defects can be found, flagged and a record sent to rework in a few seconds, and automated network routing for rework is also available.

Configurable for Any Application

Inspect software is easily configurable for any application where collection and characterization of product defects is required. Data collection can be done at stand-alone workstations or using mobile data collectors.

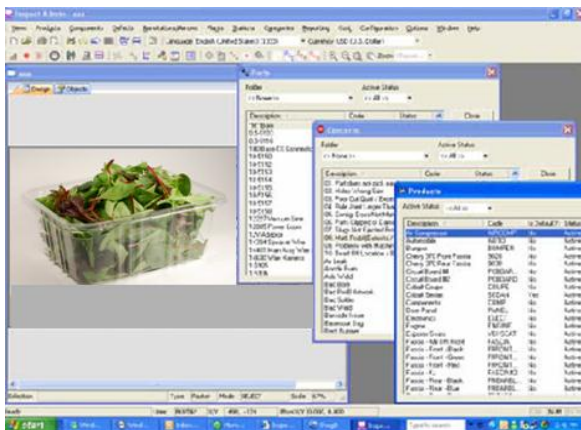
Data is stored in an SQL database for immediate access from any web browser via a Reporting Module. The reporting software includes a wide range of defect reporting tools. There is also an optional interface to e-mail, cell, overhead display and other electronic notification tools.



A typical Inspect Data Collect screen.

Eliminate Paper Checklists

ATS Inspect's ► **Data Collect** application includes computerized checklists to record issues and to make sure all required visual checks have been completed. This eliminates paper checklists and the difficulty of preserving, retrieving and using checklist data for later review and analysis.



Graphic images are easily imported using the Admin application.

Real-time data collection drives the Inspect system. Fast, flexible and reliable input makes operators and inspectors open to using the system. Inspect makes it all happen with a choice of keyboard, mouse or touch screen input. ATS Inspect accommodates both visual and functional data entry. Photos can be captured and stored using the **Data Collect** module and CAD drawings can be imported and included in inspection screens for defect location accuracy.

The zoom and scroll functions allow easy viewing of images that are larger than the displayed view. Operators can quickly apply the same concern to multiple locations on a defective part. This increases the speed of multiple concern identification, decreases throughput time and moves parts to repair stations more quickly.

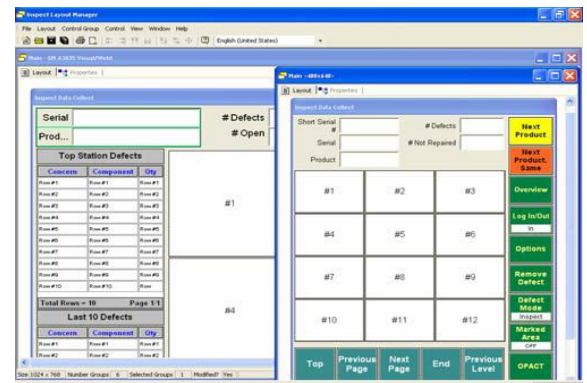
Easy Configuration and Setup

The Inspect **Admin** application organizes and controls the configuration of the system. This includes product and view setup, station setup, parts, locations, defects and other product related items. The ability to import images and associate them with specific products makes fast work of setting up your inspections. The Admin Module is also used to create checklist questions and assign them to workstations.

Multiple language sets are available. A user-configurable data file allows the language displayed at each station to be tied to user identification, so that employees who speak different languages can operate efficiently throughout a facility. You can also set up user/group security to identify personnel who can enter and edit data.

Customize Workstations and Platforms

You can design custom screen layouts for inspection stations using the **Layout Manager** application. This includes moving, resizing and removing different controls (such as buttons, image selection and labels), selecting image boundaries and defining actions based on user interaction.



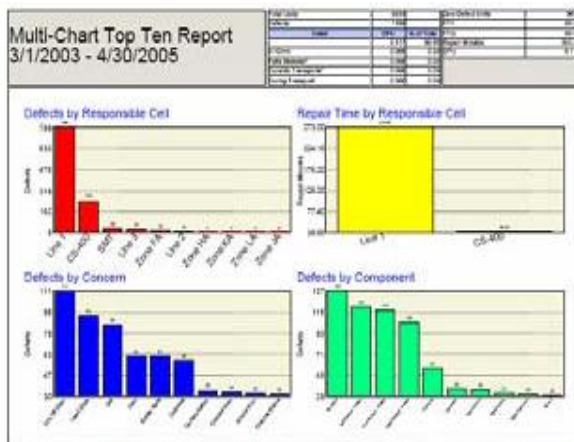
Create easy-to-use custom templates in Layout Manager.

This flexibility also lets you use different data collection platforms as need dictates in your facility, including desktops, laptops and mobile devices.

View Reports Online

ATS Inspect's ► **Reporting** application allows real-time quality data to be viewed in various charts with the ability to export reports to Excel spreadsheets. Internet support includes browser-based reporting for Microsoft Internet Explorer running on secure connections. Outside suppliers can view quality and production data online for the parts they supply.

Reports can be generated for each product tracked in the system, and can be based on factors such as serial number, date, time, production area or cell, historical quality data, operator/inspector, defect type, severity /rank, repair status and current location. Report settings can be personalized for each user.



Inspect Reports can include multiple full-color charts.

Over 70 pre-defined charts include:

- ▶ Trend charts, line, bar, 3D and 2D
- ▶ Combination trend, multiple series bar and/or line
- ▶ X-bar, R-chart, P-chart and U-chart

Instant Event Notification

The ► **Event Service** application lets you instantly inform personnel of the current state of quality throughout the production facility and off-site. Inspect utilizes a messaging service that conveys information via cell phones, e-mail and overhead monitors. The Event Service function can be configured to send out information-based or exception-based events or routing schedule occurrences.

- ▶ Criteria for event messaging is user defined and may include:
- ▶ Quality threshold
- ▶ Production threshold
- ▶ Critical defect
- ▶ Quality status
- ▶ Production status



See the Cost of Quality

You know that Inspect delivers information on the quality of your products. But what about the cost of quality? Inspect ► **Costing** allows you to see the cost of quality. You can calculate the repair cost of each product as well as how much labor and material cost is tied up on the plant floor at any given time.

For any given part, location, defect or type of repair, the Costing application can help generate reports showing:

- ▶ Time to repair
- ▶ Supply costs
- ▶ Labor costs

Other Features

Inspect software includes an XML Comm Server interface. This interface gives Inspect the capability of importing XML data from external systems. Also included is OPC Server service to publish key inspect data, such as concerns, repairs, inspections and tracking information. This allows connected OPC clients to capture and process Inspect information.

A standalone ► **Data Importer** function lets users import parts, locations, concerns, details, repair types and product data directly from an Excel spreadsheet into the Inspect database. The ► **Data Importer** eliminates the need for manual data entry of information already stored in other databases or files.

This feature supports all standard versions of Excel, and data imported from the spreadsheet can be previewed before being used in the Inspect application.

The Multi-Session function allows the system administrator to enable multiple ► **Data Collect** sessions to run on the same workstation. When Multi-Session is enabled, inspectors with different responsibilities can share a station. In addition, stations where Multi-Session is enabled are available as a backup should another station fail.

Key Points

- Reduces costs
- Easy-to-use operator interface
- Uses SQL database
- Configurable for many different applications
- Real-time attribute data collection
- Easily integrates with other manufacturing systems
- Eliminates paper checklists



ATS is an *Independent Solution Provider*, with over 25 years' experience in the manufacturing systems arena and a wealth of experience undertaking Continuous Improvement initiatives and Manufacturing IT solution design, deployments and 24/7 support assignments.

www.ats-global.com