

Getting the Most Out of Attribute Data Collection with ATS Inspect

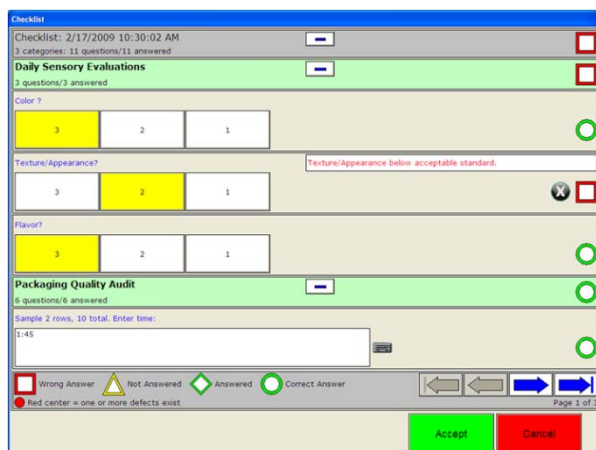
ATS Inspect is the preferred data analysis tool for Six Sigma Black Belts in the attribute data world. Read on to find out why.

ATS Inspect Data Collect

ATS Inspect ► **Data Collect** allows an operator on the production line to quickly and easily record concerns together with the information required to carry out repairs on the product.

Eliminate Paper Checklists

ATS Inspect ► **Data Collect** includes electronic checklists to record issues and to make sure all required visual and option content checks have been completed. This eliminates paper checklists and the difficulty of preserving, retrieving and using checklist data for later review and analysis.



Paperless checklists

Data Entry to Suit Your Needs

Real-time data collection drives the ATS Inspect system. Fast, flexible and reliable input makes operators and inspectors productive and open to using the system.

► **Data Collect** can be run on a handheld data collection device or on a stationary PC workstation. Handheld devices are useful for roving data collection, whereas stationary workstations can be used at fixed data inspection locations.

In either case, operators can enter quality concerns for a part (including the type and the severity of concern) and then assign it for repair.

Inspect makes it all happen immediately with a choice of keyboard, mouse or touch screen input.



Handheld devices are useful during inspections

Customize User Interfaces

Using ATS Inspect ► **Layout Manager** you are able to design the user interface and define actions based on user interaction. This flexibility also allows you to use different data collection platforms as need dictates in your facility. You can design a different set of screens for each device and assign them directly to each terminal.

Taking it Step by Step

Product inspections can vary enormously in size. A single unit may have hundreds or even thousands of attributes that need to be checked and verified.

ATS Inspect is prepared for this and allows you to set up inspection steps that will guide the operator through the process in a structured, methodical manner.

Take a Picture

Digital photos and CAD drawings can be imported and included in inspection screens for defect location accuracy.

If you wish you can even take a photo of a quality concern and store it alongside the defect in the system.

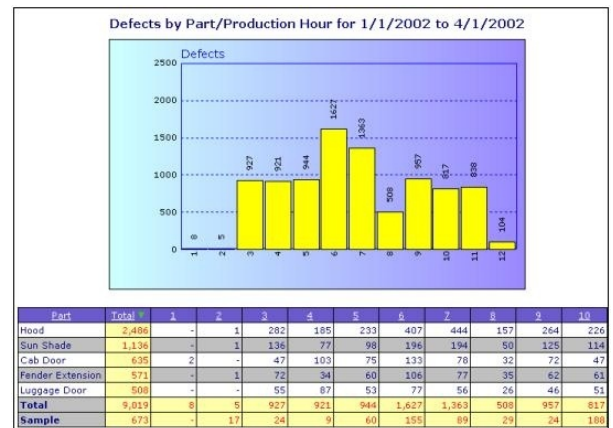


Pinpointing defects with Data Collect

View Reports Online

ATS Inspect ► **Reporting** allows real-time quality data to be viewed in various charts and tables. You can even export reports to spreadsheets and PDFs.

The web-based reports can be viewed anywhere in the world using Microsoft Internet Explorer running on secure connections. This allows management to monitor performance even while on the road.



Display recorded data in charts and tables

On top of all this you will have the ability to create your own fully customized reports using ATS Inspect ► **Advanced Reporting Services**. Designing reports in-house means you can quickly respond to the needs of your business as soon as they arise.

Making Savings

Data Collect will make you savings on several levels:

- Labor and time saved by entering information directly into the database
- Reduction in rework and scrap
- Time saved in creating
- Better quality sent to the customer

For further information visit our website at www.ats-inspect.com

About ATS

ATS is an **Independent Solution Provider**, with over 25 years experience and a wealth of experience undertaking Continuous Improvement initiatives and Manufacturing IT solution design, deployments and 24/7 support assignments. www.ats-global.com

