



ATS Global B.V.

# ATS Inspect

## Case Study

### MAN Truck & Bus AG



[www.ats-inspect.com](http://www.ats-inspect.com)

# MAN Truck & Bus Advances Quality Assurance by Implementing ATS Inspect

*At their plant in Steyr MAN needed a visual quality solution to keep their product quality ahead of the competition. Find out why they chose ATS Inspect.*

## About MAN

In their facility in Steyr MAN Truck & Bus AG develop and manufacture their light and medium trucks as well as special vehicles and cabs for the MAN production network.

At MAN Steyr they strive to be Europe's best manufacturer with regard to product, quality, efficiency and customer satisfaction.



Achieving these goals requires numerous simultaneous strategies, procedures and actions at every level of the company, some which can be seen and others that work away in the background, gradually pushing up and maintaining standards.

Down on the production line a very visible solution has been implemented to keep the product quality at the highest possible level. That solution is ATS Inspect.

ATS Inspect is reducing the costs associated with scrap, rework and warranty claims by collecting, analyzing and reporting attribute data.



## Checking for visual defects

At key gating points along the production line ATS Inspect is used by operators to carry out a visual inspection of the vehicle.

When an operator finds a defect, such as a scratch or dent or

“The system is very comfortable and not complicated for the operators.”

even an incorrect component, they can easily highlight it on a picture of the product. With a few clicks they record the exact location, type and severity of defect.



Defects are entered using both fixed workstations and tablets that allow the operator to move around the vehicle as they're recording the results of the inspection.

## Quality Assurance for Mass Customization

At MAN Steyr the many different customer requirements call for flexibility within their production process and every truck that comes off the production line is slightly different.

This mass customization adds a layer of complexity to the inspection process which ATS Inspect is ideally suited to.

When a truck on the production line arrives at an inspection point a barcode containing the unique identification number of the truck is scanned. This value goes directly into ATS Inspect and the inspection is tailored to the exact requirements of the current truck.



The operator is presented with a selection of views which correspond to both the model and configuration of the truck and the station at which they're working. The operator can then highlight defects on the views presented.

Likewise, electronic checklists, with which the operator will confirm that all of the customizations have been correctly implemented, will dynamically adjust so that each unit has a personalized inspection.

This individualized process means that even when every truck is different, no truck will ever leave the plant with an incorrect build or quality defects. With ATS Inspect MAN Steyr can ensure that individuality does not come at the cost of quality.



## Complete Traceability

Traceability is built into ATS Inspect, allowing MAN Steyr to track and trace every unit they produce.

Every inspection station a unit passes through records further quality data and allows them to build up a fully detailed picture of its current status and the processes it has been through.

ATS Inspect provides a complete history of where the units have been and when they were there. This means that when quality issues arise they're perfectly positioned to review



every action that has taken place. Once they've located the source of the issue they're able to view every unit that passed through the trouble spot, both before and after it.

### Easy to Learn

Operators are guided through the touch-screen data entry process using an intuitive workflow. This means that training requirements are kept to a minimum and new employees can be up and running in no time.

The user interface has been designed exactly to their requirements so that the operator has everything they need without having to work around superfluous functionality.

### Reporting

When selecting an automotive inspection solution a critical requirement for the team at MAN Steyr was the ability to analyze the collected data.

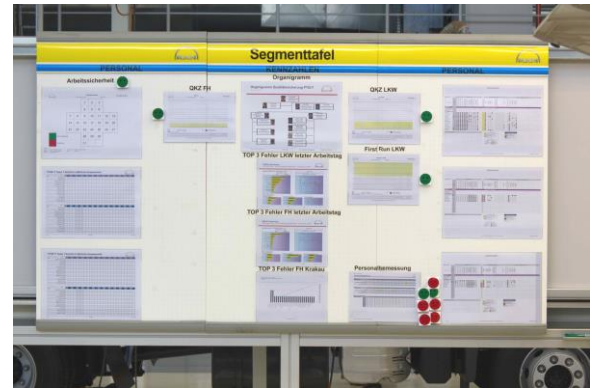
“Everybody is well informed because everybody involved has access to the reports.”

They found this in the powerful reporting capabilities of ATS Inspect. Information entered in ATS Inspect is immediately available for analysis so generated reports are always up-to date.

They have a vast range of ready-made reports available to them that allow them to review every aspect of their product quality, from a complete inspection history of a single unit to a trend overview of the total number of defects recorded over the last month.

“We love the range and customizability of the reports.”

In the image below you can see ATS Inspect reports displayed on the factory floor. This information, made directly available to both operators and managers, makes everyone aware of issues as soon as they arise so that decisions can be made to find solutions using all of the available information.



### Further Information

ATS Inspect is an invaluable part of the MAN Steyr mission to maintain their truck's reputation for supreme reliability. For further information on ATS Inspect and for more examples of where ATS Inspect is giving manufacturers the edge over their competitors please go to [www.ats-inspect.com](http://www.ats-inspect.com).

### Part of the ADOS Suite

ATS Inspect is part of the award winning ATS ADOS software suite. ATS ADOS gives you world-class data collection, reporting and analysis while its cross-application integration provides endless avenues along which to develop and expand your manufacturing potential. Find out more about ATS ADOS on our [website](http://www.ats-ados.com).

