

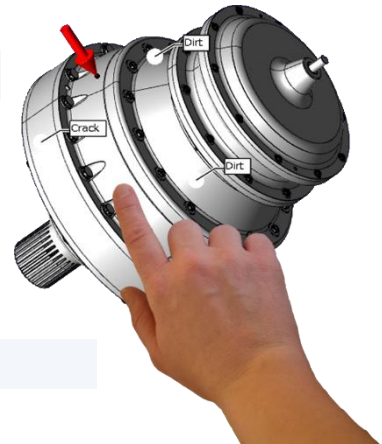


**ATS Inspect** is a powerful, visual quality inspection tool. Attribute and variable data are easily recorded, providing real-time quality reports and alarms for immediate reaction.

*Don't let defective products ever leave your site again.*

### Innovative Visual Data Collection

- Highlight defects using rotatable CAD models
- Layered images mean no component is hidden
- Create simple step-through processes for complex inspections



### A Smarter Way to Work

- Touch-screen data entry
- Paperless data collection
- Integrates with existing electronic input devices
- Configurable to any product and any process



### A More Efficient Way to Work

- Significantly reduces response time to critical incidents
- Web reporting provides information anywhere, anytime
- Traceability of your products during the production process
- Open system exchanges data with ERP, MES, OPC
- Sends defect alarms to email, mobiles and overhead displays



### Savings You Can See

- Reduces costs related to rework and scrap
- Decreases the number of warranty claims
- Saves time and money with fast, accurate quality checks
- Automatically calculates costs related to quality issues

