



ATS Global B.V.

# ATS Inspect

## In The Aerospace and Defense Industry



[www.ats-inspect.com](http://www.ats-inspect.com)

## Advanced Quality Control with ATS Inspect

*Quality control is of paramount importance to the aerospace and defense industry and so it's important to have in place the right, affordable solution. Read on to see how ATS Inspect can raise your standards while lowering your costs.*

### Capturing Quality Data

ATS Inspect makes light work of the quality control required by your manufacturing processes. The suite of applications provides a number of different approaches to assessing quality:

- ▶ Collects and analyzes attribute data where defect information is critical to the production of quality parts.
- ▶ Collects and analyzes variable data such as weight, length and pressure to ensure they stay within specified limits.
- ▶ Utilizes electronic checklists to vastly reduce human error and increase quality control efficiency.

### Fast Installation and Setup

For both attribute and variable data collection the entire setup, from installation through to the first use on the production line, couldn't be simpler. Out of the box ATS Inspect has everything you need to be up and running with the minimum of hassle.

### For Any Manufacturing Process

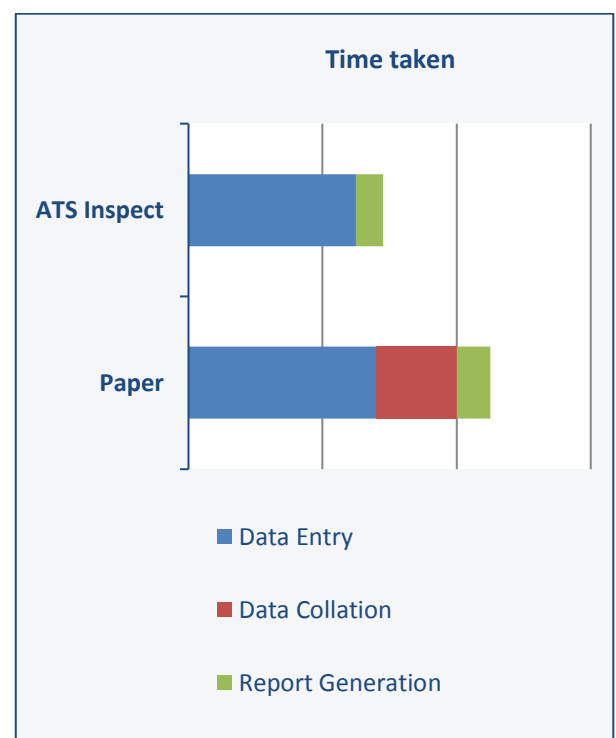
ATS Inspect can be adapted to capture quality data in any process used in the aerospace and defense industry. This could include:

- ▶ Weld audits
- ▶ Casting paint audits
- ▶ Metal surface defect tracking
- ▶ Assembly defect and rework tracking
- ▶ Repair and maintenance evaluation.

### Paperless Manufacturing

Human error is reduced to a minimum by removing the requirement of re-entering information from a paper record into the database. With ATS Inspect information is entered directly into the system.

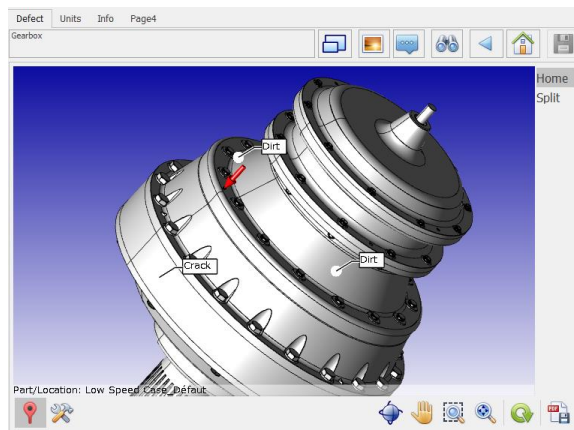
Time and money are saved by avoiding duplicate data input. The production of checklists is also simplified as questions and answers can be updated in real-time rather than having to re-write and re-print each checklist.



## 3D Inspection

Defects can be placed directly onto 3D CAD models. All major CAD formats are supported allowing you to import your existing models. The name and ID of every component within the model can also be imported into the database which will greatly reduce your setup time.

When you need to add a defect you can smoothly rotate the model, using a mouse or touch-screen, zoom in to the required area and assign the defect.



By bookmarking key positions the operator can jump to preset perspectives with cut-throughs and with components removed so that they can place defects inside the product without the need for multiple views and photos to be taken.

## Layered Inspection

The operator can also place defects on multi-layer 2D views. This allows them to strip away information to see *inside* the object being inspected.

For example, if you were inspecting the interior of a car door you could have layers that represent the door panel, wiring harness behind the door panel and finally the shell of the door.

This layered approach mimics real-world inspections and speeds up data collection which reduces costs and means no defect can remain hidden for long.

## Built-in Digital Thread

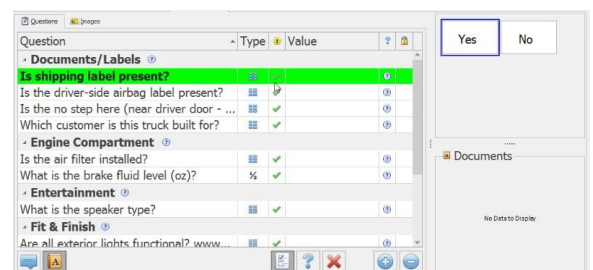
Having the complete quality control system in one place means that the digital thread for each item is automatically generated as it passes through the production process.

The item being manufactured is registered at each step of production and any associated defects, repairs and checklist answers can be reviewed and analyzed at anytime from anywhere in the world, but more on that later.

## Electronic Checklists

ATS Inspect utilizes electronic checklists to record issues and to make sure all required visual checks and safety checks have been completed. This eliminates paper checklists and the difficulty of preserving, retrieving and using checklist data for later review and analysis.

Data can be entered using a PC, tablet or handheld device. Entering data directly into the system reduces the risk of human error.



## Reference Documents

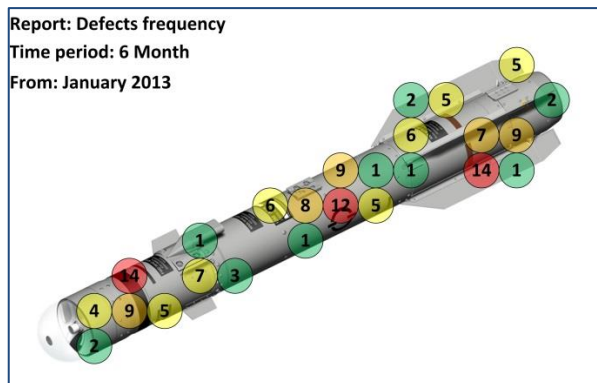
It's often useful to have some extra information about how to carry out an inspection. This is where Reference Documents come in handy. Operator instructions, visual aids or whatever else you may need can be accessed by the operator when they need them most.

## Exceptional Reporting

The powerful reporting abilities of ATS Inspect allow you to fully utilize the recorded data as well as providing full access to the digital thread of anything from a nut or bolt to a completed tank or jet engine.

Collected data and checklist information can be viewed in real-time in a wide range of charts and tables. You can even export reports to spreadsheets and PDFs.

The web-based reports can be viewed anywhere in the world using a web browser on a secure connection. This allows management to review production even while on the road.



Reports can be generated for each product tracked in the system, and can be based on factors such as serial number, date, production area, operator, checklist category, control point, product status and current location. Any data entered can be used.

On top of all this you will have the ability to create your own fully customized reports. Designing reports in-house means you can respond to the needs of your business as soon as they arise.

If required each user can create their own set of fully customized reports so that they're just presented with the information that's relevant to them.

Up-to-the-minute reports can also be scheduled to be sent to the relevant people at regular intervals automatically. Do you need that report on your desk first thing Monday morning? It'll be there.

## Instant Event Notification

Personnel can be instantly informed of quality issues throughout the production facility by utilizing ATS Inspect's automated messaging service that conveys information via e-mail and

static display devices such as overhead monitors. It can even be configured to send out information-based or exception-based messages.



Criteria for event messaging are user defined and may include:

- ▶ Quality thresholds
- ▶ Production thresholds
- ▶ Critical issues
- ▶ Quality statuses

## Customize User Interfaces

ATS Inspect allows you to design custom screens that will be used by the operator collecting data. This flexibility also allows you to use different data collection platforms as needs dictate in your facility.

## Exchanging Data

ATS Inspect includes a Comm Server interface allowing data to be imported from external systems. An OPC interface is also available which allows connected OPC clients to capture and process ATS Inspect information such as concerns, quantities, checklist and tracking information.

## Data Management Tools

ATS Inspect lets users import product types, locations, concerns, details and other product data directly from an Excel spreadsheet into the ATS Inspect database, avoiding the need for manual data entry of information already stored in other databases or files.

If you find your database is getting too large another tool allows you to remove your historical data and store it on a separate file. This frees up online resources and increases the analytical speed of your production systems by reducing the amount of data in the system.

## A Complete Solution

For attribute and variable data ATS Inspect has all bases covered, from checklists through to analysis and reporting. For further information please go to [www.ats-inspect.com](http://www.ats-inspect.com) or give us a call.

ATS is an **Independent Solution Provider**, with over 30 years' experience in the manufacturing systems arena and a wealth of experience undertaking Continuous Improvement initiatives and Manufacturing IT solution design, deployments and 24/7 support assignments.

[www.ats-global.com](http://www.ats-global.com)