

Smart Automation, Quality and IT Excellence Solutions - our experience, your success

ATS cm4d[®]

ATS cm4d[®] Web

What's New in v21

The screenshot displays the ATS CM4D Web interface. The main window shows a hierarchical tree of components for a 'Model: 500'. The tree includes levels for 'Fabrication', 'Subassembly', and 'Assembly', with various sub-components like 'Fuel Tank Center 400 - Single', 'Stabilator Assembly 400 - Single', and 'Wing LH Skin 500 - Single'. A 'User Activity Log' window is open on the right, showing a table of recent actions.

#	Message	Time Taken	Status
Remove	Report exists for [Simultaneous Requirements 600]	00:00:28	Success
Remove	Report exists for [Stub Lug Breakdown 500 - Out of Tol Breakdown]	00:00:19	Success
Remove	Report exists for [Wing Lug Breakdown 500 - Out of Tol Breakdown]	00:00:51	Success
Remove	Report exists for [Wing LH Skin 500 - Single]	00:00:08	Success
Remove	Report exists for [Simultaneous Requirements 500]	00:00:19	Success
Remove	Report exists for [Access Panel Assembly 400 - Single]	00:00:07	Success
Remove	Report exists for [Vertical Stabilizer Assembly 400 - Single]	00:00:08	Success
Remove	Report exists for [Tail Assembly 400 - Single]	00:00:06	Success
Remove	Report exists for [Stabilator Assembly 400 - Single]	00:00:07	Success
Remove	Report exists for [Rudder Component 400 - Single]	00:00:05	Success
Remove	Report exists for [Fuel Tanks 400 - Single]	00:00:06	Success
Remove	Report exists for [Fuel Tank Center 400 - Single]	00:00:06	Success
Remove	Report exists for [Simultaneous Requirements 500]	00:00:18	Success
Remove	Report exists for [Fuel Tank Center 400 - Single]	00:00:10	Success

Table of Contents

v21.104.0.900	3
General Notes.....	3
New Features.....	3
1. EventSmith	3
2. User Managed Reports	3
3. User Profiles Expanded	3
4. Customize Queries – Append Timestamp	3
v21.102.0.901	4
General Notes.....	4
New Features.....	4
1. Oracle Support	4
2. Share Link	4
3. Report Tag Source	5
4. User Profile Settings.....	5
5. User Registration.....	5
6. Global Report Tags	6
7. Email Configuration for CM4D Web.....	6
Program Fixes.....	7
v21.100.0.19	8
General Notes.....	8
Program Fixes.....	8
v21.100.0.18	8
General Notes.....	8
Program Fixes.....	8
v21.100.0.17	9
General Notes.....	9
Program Fixes.....	9
v21.100.0.16	9
General Notes.....	9
New Features.....	9
Installer Checks for .NET 4.5	9
Program Fixes.....	9
v21.100.0.14	10
General Notes.....	10
CM4D Web Replaces WTC	10
Known Issues.....	10

v21.104.0.900

General Notes

- Build Date: June 24, 2016
- CM4D v21.4.0

New Features

1. EventSmith

The EventSmith Web application now available as part of the CM4D Web application.

Upgrading from the EventSmith Web Application

There is no migration path required if you are upgrading an existing EventSmith system. Simply install CM4D Web v21.104.0 and restart your EventSmith Service.

2. User Managed Reports

Web users now have the ability to create their own custom Managed Reports. This allows every user to create and manage custom reports for printing as a Web Report. These user-created Managed Reports are in addition to the Managed Reports created and maintained by the Report Administrators.

TFS 30988, 33318

3. User Profiles Expanded

User Profiles have been expanded to include the ability to clear the User Grid Cache. This allows users to reset their grids to the default state.

4. Customize Queries – Append Timestamp

When customizing queries before submitting a report, there is now an option to append a timestamp to the Report Name. This allows you to print the same report with different sample selections, without overwriting the resulting report. Once enabled, this setting is persistent until it is turned off.

v21.102.0.901

General Notes

- Build Date: March 2, 2016
- Schema: 21a-21b
- CM4D v21.2.0

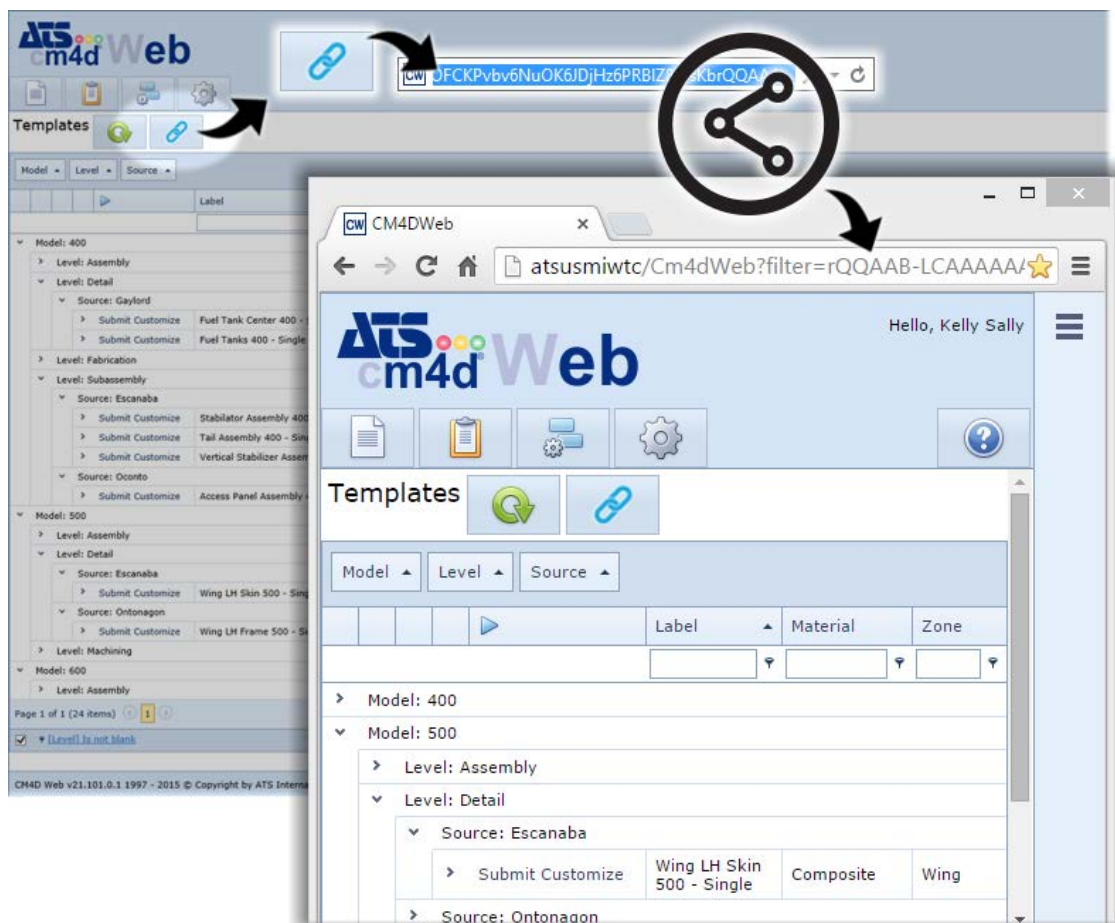
New Features

1. Oracle Support

CM4D Web can now be used with Oracle databases.

2. Share Link

An option has been added that allows you to save a URL Bookmark (*ctrl+d*) for your page configurations. You can share these links with other users, or you may save your own individual bookmarks for a drilldown structure that allows you to quickly navigate to a specific type of report.



The individual configurations can be saved for each of the four tabs. Report Administrators may choose to develop links for specific navigation and/or filtering to share with different user groups.

3. Report Tag Source

A new property has been added to Managed Reports to determine where the Managed Report will get its Report tags. The Report tags can now be obtained according to one the following five options:

- **Document Only** - only tags that are set in the Managed SheetSet(s) within the Managed Report will be used by CM4D Web.
- **None** - no tags will be used by CM4D Web, even if tags are available for the Managed Report.
- **Global Only** - only Report Tag Defaults set in SiteManager will be used by CM4D Web.
- **Global if No Document** - tags assigned at the Global level will be used ONLY if no tags are set for any SheetSet(s) in the Managed Report.
- **Both** - tags from both the Managed SheetSet(s) and Report Tag Defaults set in SiteManager will be used whenever available.

The Report Tag Source can either be set manually on new or existing Managed Reports, or set during the Migration of v20 documents (as long as the migration is done in v21.2.0). Global Report Tags are selected in SiteManager (see page 6).

4. User Profile Settings

Some information for each individual user will now be stored in the Site database to allow you to use the same settings regardless of the computer you use to access CM4D Web. While some of this information is stored automatically, there are a few options that are configurable from the CM4D Web interface.

Automatically stored information:

- User Layouts (not the same as Share Link)

Configurable stored information:

- Show Confirmation Dialog when deleting Web Report
- Show Confirmation Dialog when deleting Managed Report
- Custom Query Max Sample Count Default
- Custom Query Max Days Out Default

See the CM4D Web help documentation for more details on each of these options.

TFS 30991

5. User Registration

If a CM4D Web user is not registered in the CM4D Site database, the user will be prompted to register their Windows User ID for access. Registering will send an email request to CM4D Site Admins and add the User to SiteManager. To grant a user access to the Site database and reports therein, they will need to add that user to a Group or Groups with the appropriate privileges. The database(s) that the assigned group(s) have access to determine the Templates and Reports that the registered user will be able to see.

User registration is only available if the Site Administrator has configured this method. If self-registration is not configured, users that are not in the Site database will receive an error. See the SiteManager section on page 6 for more information on where the email is configured.

TFS 30854

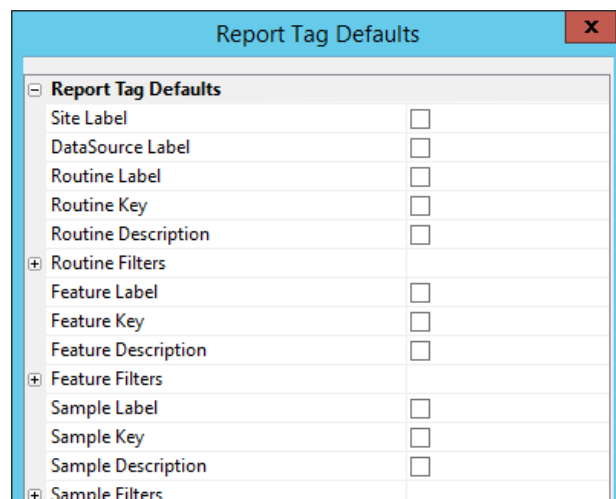
SiteManager

6. Global Report Tags

Report Tags can now be configured at the Site database level, for all Managed Reports that use "Global Only", "Global If No Document" or "Both" as the Report Tag Source (see page 5 for Source descriptions).

These Global tags are set in SiteManager. In the Settings menu, select the option Global Report Tags. Check or uncheck the boxes next to the Tags that you want to use for Managed Reports that use the Global option.

Any changes to Global Report Tags will be automatically updated for all Managed Reports that use Global tags the next time the Managed Report is printed (for Scheduler and/or Web).

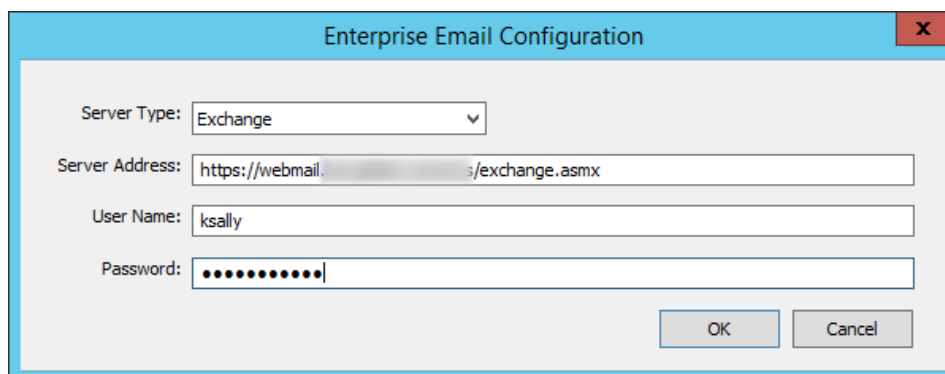


Custom Report Tags can still be set at the Document level by adding tags to Managed SheetSets. TFS 30839

7. Email Configuration for CM4D Web

If you choose to allow users to self-register for access to CM4D Web (see page 5), you must configure the email server that will be used to send and receive the email notifications from users as they register.

Go to the Settings menu in SiteManager and select Enterprise Email Configuration. Enter the information for either an email exchange server or an SMTP server. If your server uses authentication, be sure to enter valid credentials as well.



Any users in the Site that have the Site Data Administration privilege will receive User Registration notification emails. The Site Data Administration user(s) must have a valid email address entered in the Users tab of SiteManager in order for the registration notifications to be successfully delivered.

If you do not want to allow users to register this way, do not configure the email settings. Manually add all of your CM4D Web users in SiteManager and assign them to a Group. Users who attempt to log in to CM4D Web that have not been added to SiteManager will receive a login access error.

Program Fixes

Corrected item	What it means
Managed SheetSet selection causes 'jump' in list	When selecting a Managed SheetSet to include in a Managed Report, the selected SheetSet moves to the beginning of the list. This causes a strange re-ordering of the list. TFS 30992
The Default Number of Selected Samples is too low	When selecting Samples for a Report, the default is 100 Samples, and 30 days. If there is no data available, the list of Samples is empty. <i>Solution: This number is now configurable via the User Profile Settings (see page 5).</i> TFS 30983
Web Users have access to all templates	CM4D Web users have access to all Reports in a Site database, regardless of the access granted to them via their Group privileges. <i>Solution: Users will now only see Reports that have SheetSets for Managed Documents in the Site(s) to which the user has been granted access. If a Report does not contain any SheetSets, it will not appear in the Templates list.</i> TFS 28001 – Partial fix for a Known Issue; see remaining issue on page 10.

v21.100.0.19

General Notes

- Build Date: January 28, 2016

Program Fixes

Corrected item	What it means
Error when Creating or Editing a Managed Report	When trying to create or edit Managed Reports, an error message is displayed. TFS 33276

v21.100.0.18

General Notes

- Build Date: January 25, 2016

Program Fixes

Corrected item	What it means
Cannot update Managed Reports	When updating a managed report it shows you "Managed report already exists", even though duplicate information is not being entered. TFS 33077
Cannot edit or create Managed Reports	When editing or creating a new Managed report, it shows "Message from webpage - undefined". TFS 33115

v21.100.0.17

General Notes

- Build Date: December 17 2015

Program Fixes

Corrected item	What it means
Can have duplicate Managed Reports in Web	Duplicate Managed Reports can be created. TFS 31066

v21.100.0.16

General Notes

- Build Date: December 7 2015

New Features

Installer Checks for .NET 4.5

Since the .NET 4.5 Framework is required by CM4D Web, a check has been added to the CM4D Web installer to make sure that this prerequisite is met before the install allowed to complete.

Program Fixes

Corrected item	What it means
Custom query produces empty report	When selecting random Samples to customize a query, the produced report is empty. TFS 30984

v21.100.0.14

General Notes

- Build Date: October 14 2015
- Schema Version: 21a-21a
- CM4D v21.0.0

CM4D Web Replaces WTC

A complete overhaul has been done on WTC (Web Template Control) web reporting application. The new version, called **CM4D Web**, is a much nicer and user-friendly web interface, takes advantage of new technologies, addresses functional issues, and offers far better overall performance.

CM4D Web is an internal web server application that allows users not trained in the use of CM4D to generate or view CM4D reports via a web interface. Once logged in to the system, they can print from a list of available reports, or they can view or delete reports that they have previously printed. If the system is also running Scheduler reports, users can view and print the list of reports printed by Scheduled Jobs. Before a user generates a report, they can choose to first customize what Sample data is loaded in the report prior to printing. For example, the user can change the number of Samples that are loaded in the report, select a date range, or select specific samples, as well as limiting the number or type of Samples based on Sample Filter selections.

User-generated reports are stored in a folder dedicated to that single user, while Scheduler-generated reports will be available to all users in the system. The reports generated by Scheduler can only be viewed via the web interface, they cannot be customized or deleted by Web users. CM4D Web has a separate installer, but it interacts with and utilizes the CM4D Scheduler and CM4D Launcher services and applications on the host server to generate and print CM4D Reports.

Known Issues

The following are minor known issues that you will want to be aware of. These issues will either be addressed in a subsequent patch release, or are part of an on-going investigation to develop a solution.

CM4D Web

1. CM4D Web ignores Routine Access Codes.
TFS 28001
2. Deleting a Managed SheetSet from a Managed Document does not remove the SheetSet from Managed Reports in CM4D Web.
TFS 28240
Workaround: Before deleting a Managed SheetSet, unmanaged the SheetSet, save your Managed Document, then delete the SheetSet.