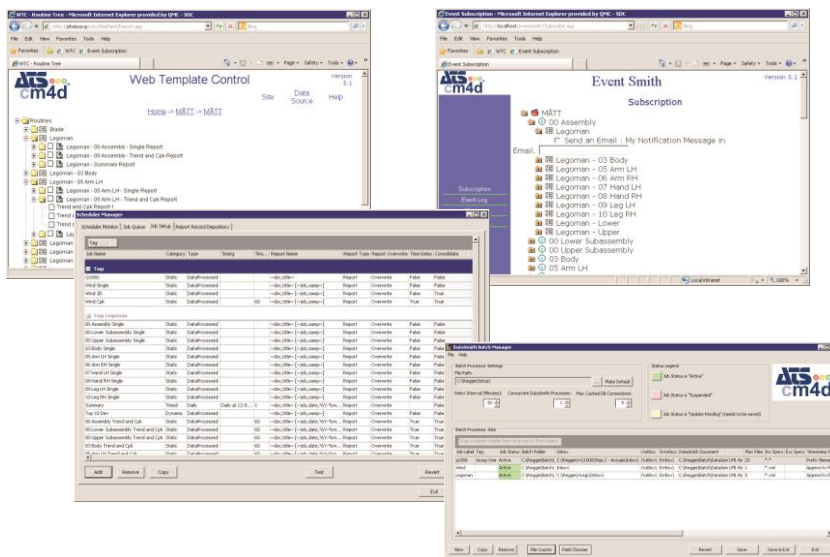




# CM4D Enterprise

...is the highest level of the CM4D Suite, with automated **Product Quality Validation for the manufacturing enterprise.**

Gathering dimensional data from any and all collection devices (including supplier data); processing, analysing, and formatting the data into effective reports, and delivering crucial information for solving and preventing build problems.



## Highlights:

- ▶ Automation
- ▶ Scheduled reports
- ▶ Alarm email notification
- ▶ User privileges
- ▶ Web reporting
- ▶ Change logging

## Including:

- ▶ Scheduler
- ▶ DataSmith Batch
- ▶ EventSmith
- ▶ Web Template Control
- ▶ Report Record

To view or download:

- ▶ Brochures
- ▶ System requirements
- ▶ Videos

Visit [www.ats-cm4d.com](http://www.ats-cm4d.com)

CM4D is the comprehensive quality data management Product Quality Validation solution.

- ▶ Customized or automated report generation
- ▶ Data navigation and retrieval with complete history
- ▶ Statistical Process Control and alerts
- ▶ Breakdown, rollup, summary and exception reports
- ▶ 3D and 2D part visualization
- ▶ Embedded relational database for any data format