



ATS CM4D is a powerful quality data reporting tool that fills the gap between the virtual design world of Computer Aided Design and the physical world of manufacturing. It highlights differences between the geometric design specification and the “as built” data from a manufactured item. Tackling these issues allows manufacturers to attain the highest quality possible.

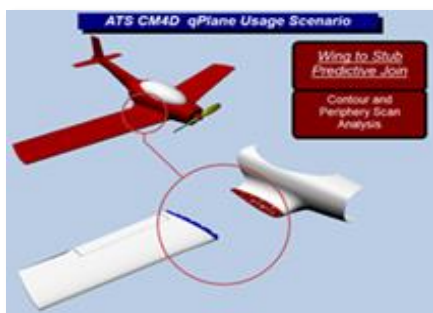
<p>Import dimensional data</p>	<p>Import original 3D model</p>	<p>Compare & analyse</p>
<p>Basic custom reports</p>	<p>Advanced custom reports</p>	<p>Automated or scheduled enterprise-wide reporting</p>

Functionallities and Benefits

- ▶ Collect any type of dimensional data from any device on the shop floor
- ▶ Predict fit problems before they occur
- ▶ Validate supplier parts before they ship
- ▶ Reduce warranty claims and recalls
- ▶ Bring visibility and transparency in quality processes
- ▶ Flexible SPC reporting suite
- ▶ Independent of industry standards, single automated, standalone solution; Interacts with all systems

Why do you need ATS CM4D?

How confident are you that a critical dimensional fit problem in your production process or supply chain will be identified before it leads to a production interruption or a missed delivery deadline?



„Will a wing made in Italy match up with a fuselage made in Germany when they are assembled?“

www.ats-cm4d.com



PRODUCT OF THE YEAR

Design, make, compare

The Solution for Data Management

► **ATS CM4D** offers a single solution for immediately analyzing all inspection data from in-house equipment and suppliers so that critical quality issues can be addressed early in production - *before* they lead to late deliveries.

Unlike typical inspection data reporting systems that present part data in an isolated context for comparison back to mathematical CAD designs, **ATS CM4D** presents your parts in the context of the physical assembly process. It is Product Lifecycle Management for as-built data, which is not supported by traditional PLM.

Supplier parts can be analyzed to validate critical interfaces before they are shipped. Common issues, such as non-conforming supplier products, limited process capability, and poor product manufacturability are identified before it is too late.

Any Data Format

ATS CM4D is designed to work with dimensional data from any and all collection devices (including supplier data). **ATS CM4D**

► **DataSmith** is a universal data translator that stores all of your dimensional data in a common relational database to allow quick and easy access for reporting and analysis.



Reporting and Analysis

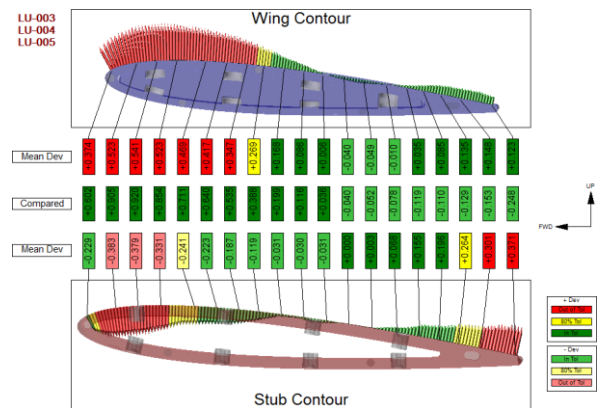
With **ATS CM4D Classic**, measurement data is dynamically associated with a representation of the CAD product model, processed by a powerful analysis engine, and formatted into reports featuring Statistical

Process Control charts and graphs for easy understanding and problem solving.

With nearly infinite customization possibilities, **ATS CM4D** can report your data in a multitude of formats, with automatic database population and retrieval.

Predictive Join

Unique to **ATS CM4D**, the innovative ► **Alignment Module** allows you to use “Virtual Shims” to analyse how two parts will fit together and calculate offsets, prior to assembly!



Which Version of CM4D Do I Want?

At any level, **CM4D** provides the same core functionality, with the flexibility and scalability to fit any need or budget:

► **ATS CM4D Enterprise**: Suitable for large networks, companies, and their suppliers; includes the full spectrum of quality reporting capabilities – from custom report development to fully Automated Reporting Services.

► **ATS CM4D Desktop**: Suitable for any size company, for data management and analysis on any level – from the data manager, to the quality engineer, to the statistician.

► **ATS CM4D Reporter**: A stand-alone, low-cost, entry-level version of **CM4D**; fully compatible (and upgradable to) **CM4D Enterprise**.